

ADVENTURE **J**ourneys

July 2025

Holiday Closings

Independence Day:	Friday, July 4 th Saturday, July 5 th
Labor Day:	Saturday, Aug. 30 th Monday, Sept. 1 st
Columbus/ Indigenous Peoples' Day:	Saturday, Oct. 11 th Monday, Oct. 13 th



EARN UP TO \$500/YEAR* BY MAKING REFERRALS!

Adventure is now offering members the opportunity to earn some serious rewards simply by referring their friends and family to the credit union.

To receive your rewards, your friend needs to join the credit union as a new member and complete a few simple requirements.*

[Visit our website to get started!](#)

*To be eligible for participation, advocates must be current members in good standing with a valid email address on file. The referred friend must not be a current Adventure Credit Union or Astera Credit Union member. To qualify for the reward, the referred friend must: 1. Open a new membership with Adventure Credit Union; 2. Enroll in eStatements; 3. Set up and receive a direct deposit of \$100 or more in a single transaction; 4. Keep the account open and in good standing for at least 30 days. Failure to meet the qualifications will result in both parties being ineligible for reward payout. Program is subject to change without notice.

Better Together.



Merger Update

On 11/1/2025, we will complete our merger with Astera Credit Union. Our systems will be fully integrated, and we will operate as one credit union under the Adventure name. Please keep an eye on our website for more updates.

More Locations to Serve You

Now that the merger between Adventure and Astera Credit Union is underway, members can now access their accounts from 10 total branch locations.

Adventure members have gained access to:

LOCATION	LOBBY	DRIVE-THRU	24 HOUR ATM
301 E. Jolly Rd. Lansing, MI 48910	▲	▲	▲
5615 W. Saginaw Hwy. Lansing, MI 48917	▲	▲	▲
14049 Lindsey Ln. DeWitt, MI 48820	▲	▲	▲
3062 S. State Rd. (Inside Walmart) Ionia, MI 48846	▲		
111 S. Waverly Rd. Lansing, MI 48917			▲



FINANCIALS

as of May 31, 2025

➤ **Assets:**
\$645,457,814

➤ **Loans:**
\$418,628,255

➤ **Shares & Deposits:**
\$561,838,913

➤ **Members:**
44,201



ITS HOMEBUYING SEASON!

If you or someone you know is in the market to buy a new home, please consider Adventure Credit Union for your mortgage needs!



Scan to connect with a local mortgage expert

NMLS: 408846

IS SOCIAL SECURITY ENOUGH?

ADVENTURE
RETIREMENT AND INVESTMENT SERVICES

Whether you dream of traveling the world in retirement or simply wish to maintain your current lifestyle, your income from Social Security alone may not be enough. A balanced retirement plan can help supplement your Social Security income and assist you in tackling unexpected expenses.

Contact an Adventure Retirement and Investment Services' professional today and we'll figure out a plan to help you not just survive, but thrive in retirement.



James Bird
Financial Advisor - Manager
jimb@adventurecu.org
P 800.323.2129 x1205
F 616.514.1825

630 32nd Street SE
Grand Rapids, MI 49548
adventurecu.org



Ralph Kapalczynski
Financial Advisor
ralphk@adventurecu.org
P 800.323.2129 x1805
F 517.333.9857

5615 W. Saginaw Hwy
Lansing, MI 48917
adventurecu.org

* Securities and advisory services are offered through LPL Financial (LPL), a registered investment advisor and broker-dealer (member FINRA/SIPC). Insurance products are offered through LPL or its licensed affiliates. Adventure Credit Union and Adventure Retirement and Investment Services are not registered as a broker-dealer or investment advisor. Registered representatives of LPL offer products and services using Adventure Retirement and Investment Services, and may also be employees of Adventure Credit Union. These products and services are being offered through LPL or its affiliates, which are separate entities from, and not affiliates of, Adventure Credit Union or Adventure Retirement and Investment Services. Securities and insurance offered through LPL or its affiliates are:

Not Insured by NCUA or Any Other Government Agency | Not Credit Union Guaranteed | Not Credit Union Deposits or Obligations | May Lose Value

Adventure Credit Union provides referrals to financial professionals of LPL Financial LLC ("LPL") pursuant to an agreement that allows LPL to pay Adventure Credit Union for these referrals. This creates an incentive for the Financial Institution to make these referrals, resulting in a conflict of interest. Adventure Credit Union is not a current client of LPL for advisory services. Please visit <https://www.lpl.com/disclosures/is-lpl-relationship-disclosure.html> for more detailed information.

LOCATIONS

GRAND RAPIDS

Corporate 630 32nd St. SE
Grandville 5165 Wilson Ave. SW
Kentwood 6672 Crossings Dr. SE
Plainfield 4211 Plainfield Ave. NE
Walker 2500 Alpine Ave. NW

IONIA

Ionia 3062 S. State Rd. (Inside Walmart)

LANSING

DeWitt 14049 Lindsey Ln.
Jolly Rd. 301 E. Jolly Rd.
Lake Lansing 2250 Lake Lansing Rd., Ste A
W. Saginaw 5615 W. Saginaw Hwy.

2025 SCHOLARSHIP WINNERS!



Paige

Paige is completing a 3-2 dual degree program at the University of Michigan and Albion College. Upon graduation, Paige plans to pursue a career in supply chain management or process improvement.



Joslyn

Joslyn is enrolled at Grand Valley State University, where she is pursuing a Bachelor's Degree in Biochemistry. Joslyn's ultimate career goal is to become a Pediatrician.



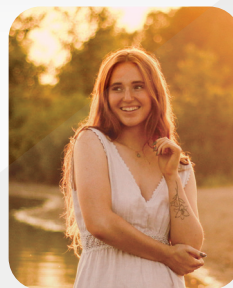
Claire

Claire has been accepted to the University of Detroit Mercy's MS Physician Assistant program. Upon graduation, Claire will pursue a career as a Physician Assistant



Payton

Payton is attending Franciscan University of Steubenville pursuing a Bachelor's of Science in Nursing. After graduation, she hopes to become either a Certified Registered Nurse Anesthetist (CRNA) or an Operating Room Nurse (ORN).



Lily

Lily is currently pursuing a bachelor's degree in interior design at Central Michigan University. After graduation, Lily intends to work as an interior designer.

